

## 1. Purpose:

Provide instructions for installing VisualSpreadsheet6 on new satellite computers and FlowCam upgrades

## 2. Requirements:

In order to run VisualSpreadsheet6 on your computer as a satellite license, your computer will need to meet the following requirements:

	Minimum	Recommended
<b>Windows Version</b>	Windows 10 64-bit	Windows 10 64-bit
<b>Processor</b>	Intel i3 / AMD Ryzen3	Intel i5 / AMD Ryzen5
<b>Hard Drive</b>	(SSD) 256 GB	(SSD) 512 GB
<b>Memory</b>	8	16

## 3. Introduction:

To enhance speed and functionality in VisualSpreadsheet, VisualSpreadsheet6 runs on a database rather than a file structure (e.g., VisualSpreadsheet4 or previous versions), so you will be prompted to install a database program. Once installed the icon appears as Heidi SQL. If you have any concerns regarding the installation of this program, please speak with your IT professional.

Yokogawa Fluid Imaging Technologies will provide you with a link for downloading the VisualSpreadsheet6 installer to your satellite computer and/or your FlowCam.

The following set of directions starts assuming this is an entirely new installation of VisualSpreadsheet or an upgrade from version 4 or older. If this is an upgrade from version 5 proceed to section 3.2 MariaDB Upgrade.

### 3.1. MariaDB Installation

Step 1. Download or copy the VisualSpreadsheet installer to the computer or FlowCam where you wish to install the software.

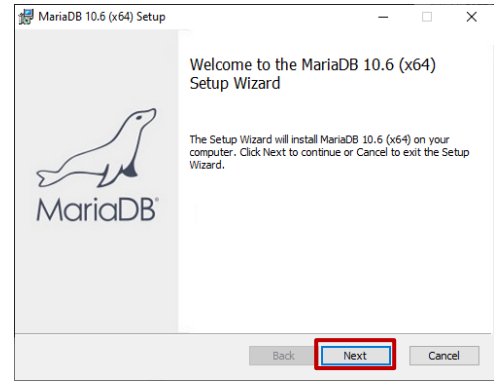
Step 2. Double-click on the installer icon and the installation will begin. A black status screen will appear displaying steps being performed during the installation.



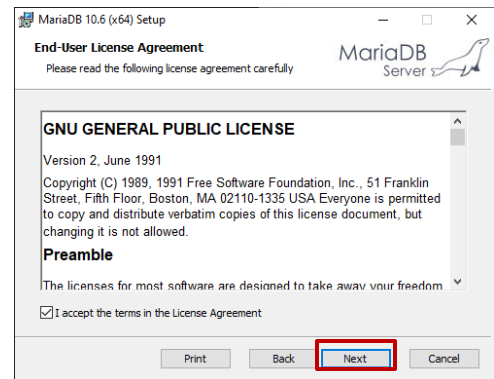
```

C:\Users\shawn.barden\Desktop\ViSp 6 Install Files\SetupVisualSpreadsheet_6.00.01.0103.exe
Checking Database Configuration...Done
Installing Database...
    
```

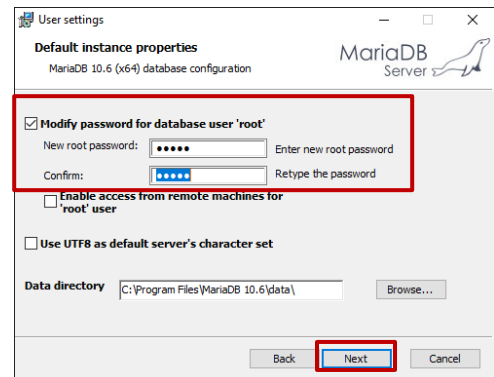
Step 3. The MariaDB 10.6 (x64) Setup Wizard will appear. Select next to begin the database installation.



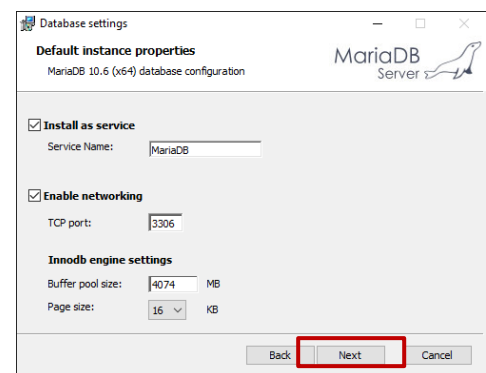
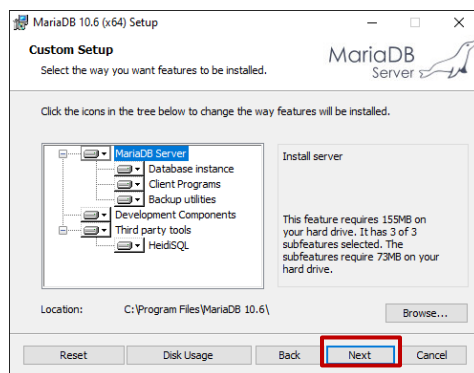
Step 4. The End-User Agreement will appear. Select, "I accept the terms in the License Agreement," then select Next. The installation directory will appear, select Next.



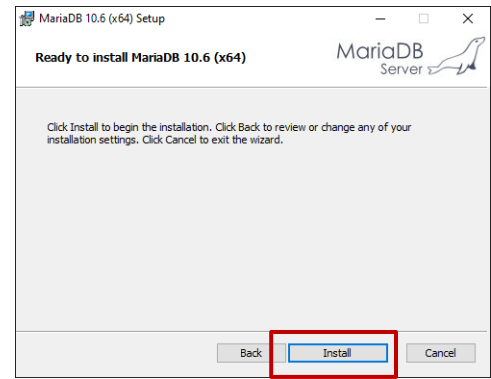
Step 5. You will be prompted to create a root password. This password will be required when you initially launch VisualSpreadsheet6 and if you ever need to restore the database.



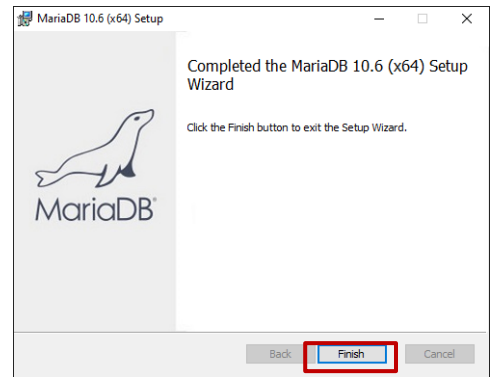
Step 6. The next window contains Database settings, use the default settings, and select Next. The database's Setup window will open, select Next.



Step 7. When the Ready to Install window opens select install and a progress bar will be displayed.



Step 8. When the Completed Setup Wizard window opens click Finish.

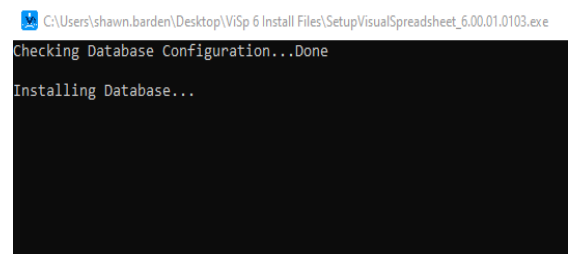
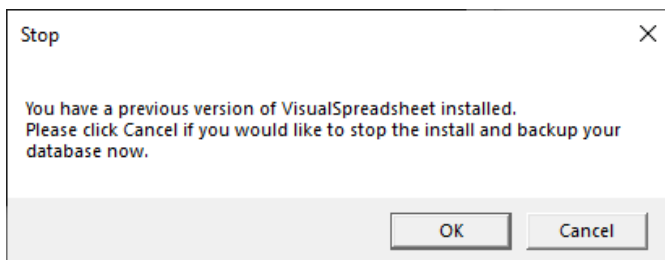


Step 9. Proceed to section 3.3 Installing VisualSpreadsheet.

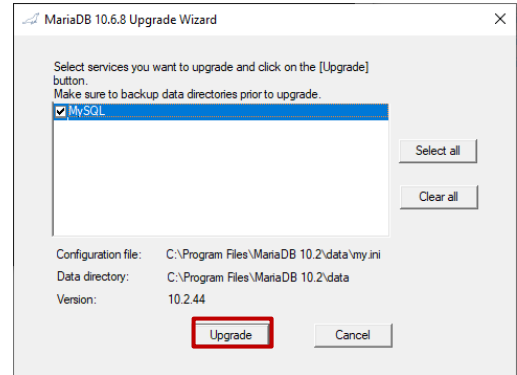
## 3.2. MariaDB Upgrade

Step 1. Download or copy the VisualSpreadsheet installer to the computer or FlowCam where you wish to install the software.

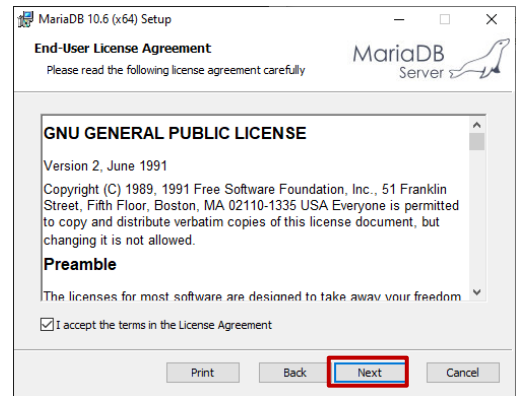
Step 2. Double-click on the installer icon and the installation will begin. You will see a warning encouraging you to backup your database. Once you have done so, click OK. A black status screen will appear displaying steps being performed during the installation.



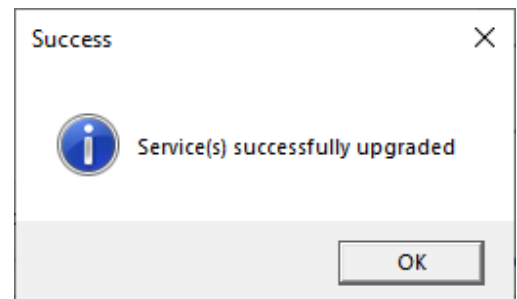
Step 3. The MariaDB 10.6 Upgrade Wizard will appear. Select the check box next to MySQL then click Upgrade.



Step 4. The End-User Agreement will appear. Select, "I accept the terms in the License Agreement," then select Next.

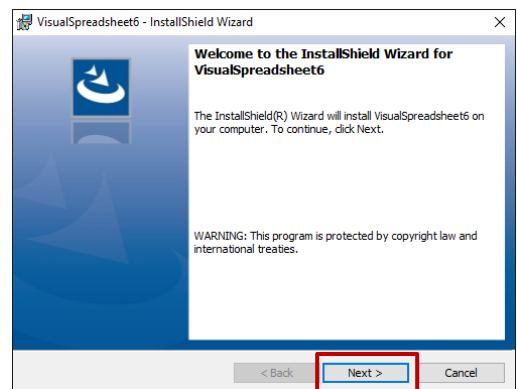


Step 5. When the update is complete a Success dialog will appear. Press OK and proceed to section 3.3.



### 3.3. Installing VisualSpreadsheet

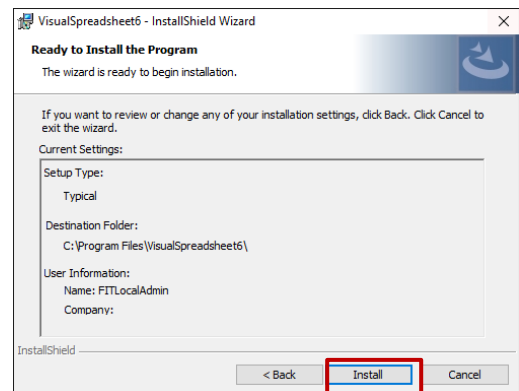
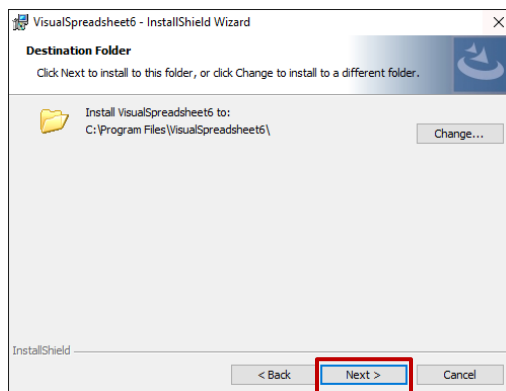
Step 1. Once MariaDB has successfully installed or upgraded the VisualSpreadsheet Wizard will open. Click next to continue.



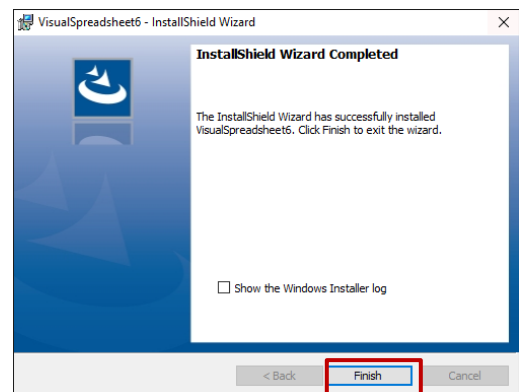
Step 2. The License Agreement will be displayed. Select “I accept the terms of the license agreement” and click Next.



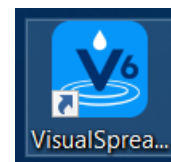
Step 3. The destination folder dialog will appear. Leave the destination unchanged and click Next. The installation is now ready. Click Install to begin.



Step 4. When the install Wizard Completed window appears click Finish.

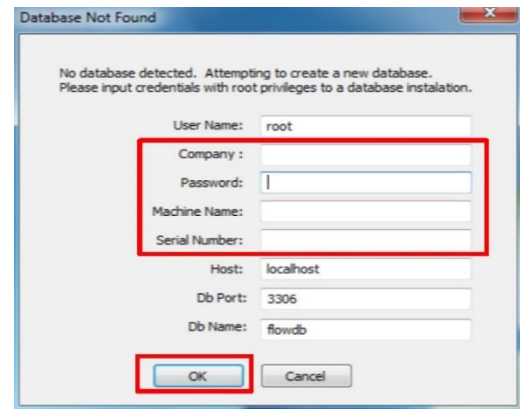


Step 5. Open VisualSpreadsheet6 from the desktop icon.

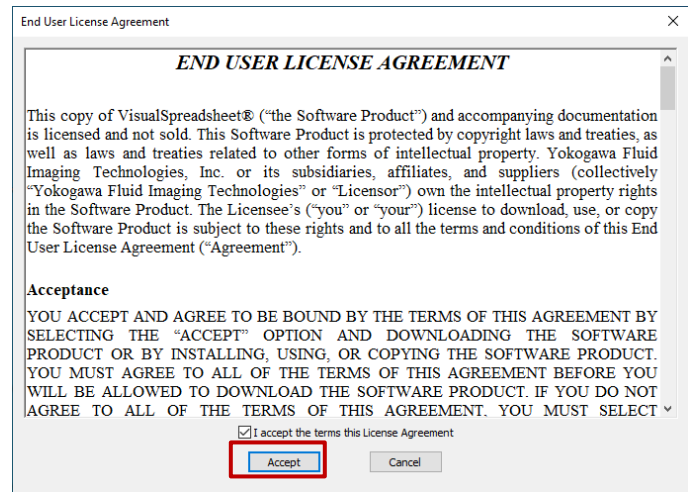


\*\*For an upgrade of an existing system skip to step 8\*\*

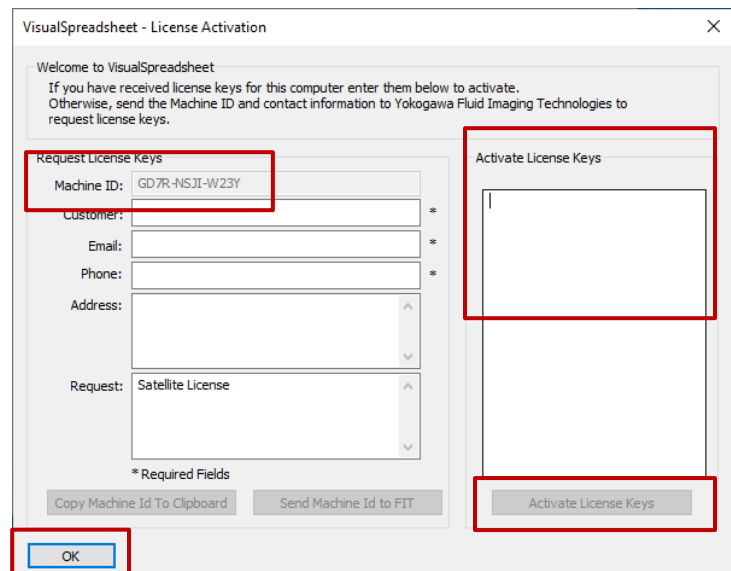
Step 6. For a new installation you will be prompted to enter the password created in section 3.1 step 5. The other fields, Company, Machine Name and Serial Number are optional fields. Select OK.



Step 7. Visual SpreadSheet 6 will open and you will be asked to accept another license agreement. Check the accept box and click Accept.



Step 8. You will be asked activate a License Key. On this page there is a field labelled Machine ID. Please send this to [customercare@fluidimaging.com](mailto:customercare@fluidimaging.com) and we will generate a key for the specific computer the installation is on. When you receive your key, enter it in the Activate License Keys field, click Activate License Keys and press OK. Multiple keys may be activated at one time.



Step 9. If you are upgrading from a previous version of VisualSpreadsheet you will be asked if you would like to migrate your documents folder to VisualSpreadsheet 6. We recommend selecting no. These files (raw camera images) can be copied manually if the user desires and are not required for the functioning of the software.

The installation is now complete. For instructions on using VisualSpreadsheet6 please refer to the VisualSpreadsheet6 User Guide.

---

## VisualSpreadsheet6 Installation Guide

Document ID number: CS1278

Revision letter: B

Document original Author: Robert A. Hicks

Original Release date of document: 9/27/2022

Most recent revision author: RAH

### Revision History

1. Created 9/27/2022
2. Rev B: Changed recommendation on migration of data folder – 10/26/2022 (RAH)